

COM Express Module

VIA

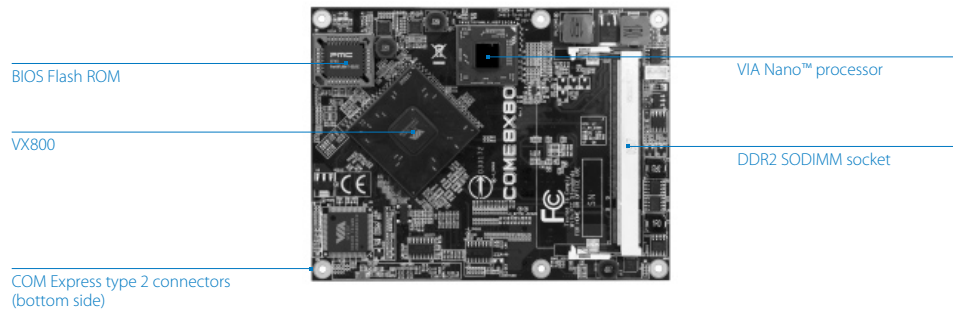
COMe-8X80

COM Express Module with Nano™ CPU, LVDS, USB, IDE, SATA, LAN, & PCIe

Features

- Low power VIA 64-bit Nano™ processor
- Supports one SODIMM socket for DDR2 memory (max.2GB)
- Integrated with VIA Chrome9™ HC3 DX9 3D/2D graphics with VC1, MPEG-2, WMV9 decoding acceleration
- Supports one 4-lane PCIe, two 1-lane PCIe, and three PCI expansion
- Display interface in CRT, 18/24-bit dual-channel LVDS panel, and one DVP port
- Supports one 10/100 Mbps Ethernet on module
- Supports one IDE and two SATA (3 Gbps)
- Supports six USB 2.0 ports

Board Placement



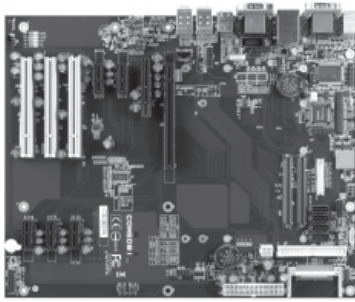
Specifications

Model Name	COMe-8X80-16	COMe-8X80-08E
Core	Processor 1.6GHz VIA Nano™	800MHz VIA Nano™
	Chipset VX800 Unified Digital Media IGP chipset	
	System Memory 1 x DDR2 533/667 SO-DIMM socket, up to 2GB memory size	
	BIOS Award BIOS, LPC 4/8Mbit flash memory	
	Operating System Windows XP, Windows Embedded CE, Windows Embedded Standard, Linux	
	Hardware Monitoring CPU temperature reading. CPU fan speed control. System Voltage monitoring	
	Watch Dog Timer Software programmable	
	Expansion Buses 1 x PCIe x4 2 x PCIe x1 3 x PCI	
Video	Chipset Integrated with VIA Chrome9™ HC3 DX9 3D/2D graphics with VC1, MPEG-2, WMV9 decoding acceleration	
	CRT Interface Analog CRT support up to 1920 x 1440 resolution	
	LVDS Interface Dual-channel LVDS panel support, both 18/24-bit	
	Expansion Buses 1 x DVP port to external HDMI/LVDS/DVI transmitter and TV encoder	
Ethernet	Chipset VIA VT6107 10/100Mbps controller	
IO	USB Supports up to 6 USB 2.0 ports	
	SATA Supports up to 2 SATA II ports	
	IDE Supports up to 1 Ultra-DMA 133/100/66 IDE port	
	PCIe Supports 1 PCIe x4 & 2 PCIe x1	
	PCI Supports 3 PCI (32-bit, 33MHz)	
	Digital I/O Supports 4 GPI & 4 GPO	
Mechanical & Environment	COM Express Pin-out Type Fully compliant to COM Express type 2	
	Dimension 95 mm x 125 mm	
	Operating Temperature 0°C~60°C	
	Storage Temperature -20°C~70°C	
	Operating Humidity 0% ~ 95% (relative humidity; non-condensing)	

* The product is only available for special project. Please contact your regional sales representative for more details.



Base Board (COMEDBI)



* The base board is only for evaluation purpose.

Ordering Information

Model Name	CPU Frequency	Description
COMe-8X80-16	1.6GHz Nano™	COM Express Module with 1.6GHz Nano™ CPU, CRT, LVDS, 6 x USB, 1 x IDE, 2 x SATA, 10/100MLAN
COMe-8X80-08E	800MHz Nano™	COM Express Module with 800MHz Nano™ CPU, CRT, LVDS, 6 x USB, 1 x IDE, 2 x SATA, 10/100MLAN
COMEDBI	N/A	COMe-8X80 Evaluation Base Board

Block Diagram

