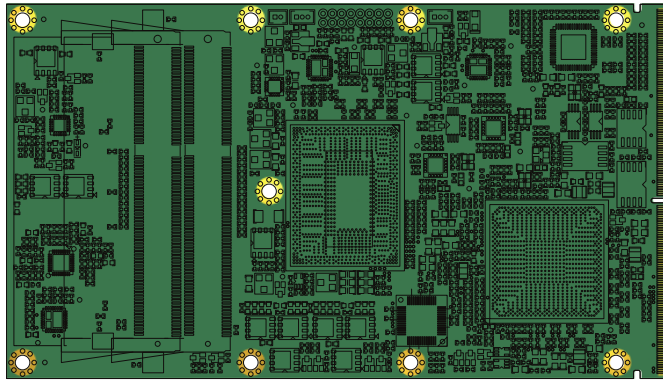


EDM-XI-QM77



Intel QM77 with 3rd generation i3/i7 Core BGA mounted ultra low voltage processor

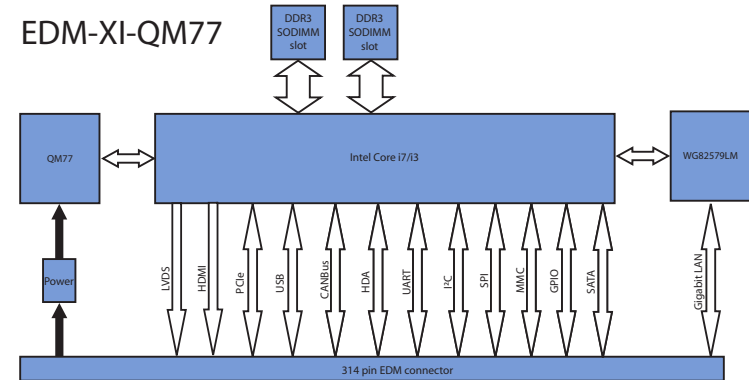
Dual channel SO-DIMM slots

With HDMI/LVDS or DP/eDP display interfaces.

Dual CAN bus



EDM-XI-QM77



Core System

CPU Intel Core i7-3555LE @ 2.5GHz
Intel Core i7-3517UE @ 1.7GHz
Intel Core i3-3217UE @ 1.6GHz
Intel Celeron Q1-2013 (TBD)
Intel QM77

System memory Dual channel DDR3 memory up to 16GB in dual SODIMM socket

BIOS AMI UEFI
CAN Bus 2x High End CAN-Bus Controller version 2.0B compliant

Connectivity

Network Intel Gigabit LAN WG82579LM

Video

Integrated Intel HD Graphics 4000
Integrated video DirectX 11, 10.1, 10, 9 and OpenGL 3.0
Feature support Intel Clear Video Technology HD Advanced Scheduler 2.0, 1.0, XPDM support
DirectX Video Acceleration (DXVA) support for full AVC/VC1/ MPEG2 hardware decode

Audio

Interface HD Audio
Audio codec on EDM baseboard

I/O

Storage 2x SATA
Serial Port 2x UART
USB USB 3.0

Power Specifications

Input power 5 VDC
Smart Battery Yes

Mechanical and Environmental

Temperature Commercial: 0° to 70° C
Extended: -20° to 70° C
Humidity 10-90%
Form Factor EDM Extended form factor
Dimensions 82 x 145 mm
(3 1/8 x 5 3/4 inch)

MTBF >50,000 hours
Weight 200 grams
Shock 50G / 25ms
Vibration 20G / 0-600 Hz

Operating Systems

Standard support Linux, Android, Windows 7, Windows 8

Optional Accessories

EDM-X-Bracket EDM extended baseboard mount bracket
HSA-EDM-S-25W EDM heatsink with fan
HSP-EDM-S-10W EDM passive heatsink
HS-EDM-XI-QM77 EDM-XI-QM77 compatible heatspreader

Feel free to contact us for custom tailored interface board request for your projects.

EDM Standard/Extended

Power 5 VDC	LAN	LVDS/ eDP 2 nd	HDMI/ DP 2 nd	PCIe x4	SATA 2 nd	LPC	HDA	SPDIF	CANBus x2	SD	SPI x2	UART x2	Buttons + GPIO	RSVD
		LVDS/ eDP 1 st	HDMI/ DP 1 st	PCIe x2	SATA 1 st	USB	USB Host	I2S 1 st				I2C x1		

Ordering Information

EDM-XI-QM77-i7-3555LE
Intel core i7 2.5Ghz EDM Extended Module with Dual LVDS and HDMI

EDM-XI-QM77-i7-3555LE-DP
Intel core i7 2.5Ghz EDM Extended Module with Dual embedded DP and DP

EDM-XI-QM77-i7-3517UE
Intel core i7 1.7Ghz EDM Extended Module with Dual LVDS and HDMI

EDM-XI-QM77-i7-3517UE-DP
Intel core i7 1.7Ghz EDM Extended Module with Dual embedded DP and DP

EDM-XI-QM77-i3-3217UE
Intel core i3 1.6Ghz EDM Extended Module with Dual LVDS and HDMI

EDM-XI-QM77-i3-3217UE-DP
Intel core i3 1.6Ghz EDM Extended Module with Dual embedded DP and DP

EDM-XI-QM77-Celeron
Intel Celeron EDM Extended Module with Dual LVDS and HDMI

EDM-XI-QM77-Celeron-DP
Intel Celeron EDM Extended Module with Dual embedded DP and DP

Dimensions

units in mm

