

## VB Series

NEW

VIA

# VB7009

Mini-ITX Nano™ X2 E, C7®-D/  
C7® Board with VGA, LVDS,  
USB, COM, Dual LAN, SATA

## Features

- Supports DDR3 1066 DIMM socket, up to 4GB memory size
- Integrated VIA Chrome9™ HD DX9 3D/2D graphics with VC1, MPEG-2, WMV9 and H.264 decoding acceleration
- Support two SATA hard drives
- Support two Gigabit Ethernet
- Support eight high-speed USB 2.0 ports
- Support six onboard COM ports (for VB7009-12XC only)
- Supports one VGA port
- Supports onboard dual-channel LVDS



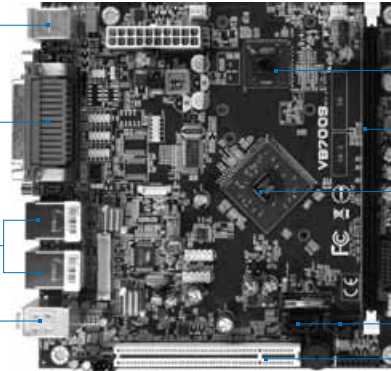
## Board Placement

PS2 KB/MS

Parallel port  
1 x COM  
1 x VGA

GigaLAN Ethernet  
4 x USB

Audio jacks



VIA CPU

DDR3 1066 DIMM slot

VIA VX900 chipset

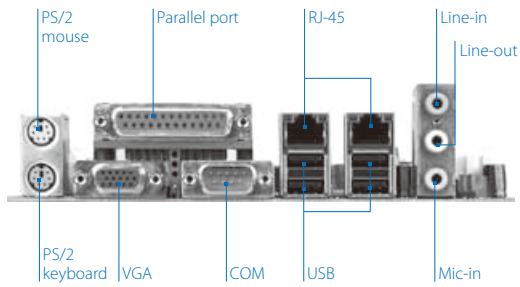
2 x SATA

PCI

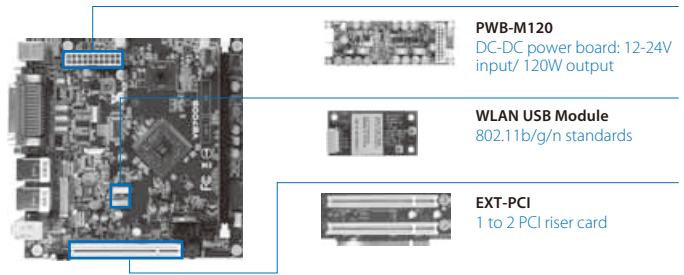
## Specifications

Model Name	VB7009-16	VB7009-10E	VB7009-12XC
<b>Processor</b>	1.6GHz VIA C7®-D (with fansink)	1.0GHz VIA C7® (with heatsink)	1.2GHz VIA Nano™ X2 E (with fansink)
<b>Chipset</b>	VIA VX900 Media System Processor		
<b>System Memory</b>	1 x DDR3 1066 DIMM socket Up to 4GB memory size		
<b>VGA</b>	Integrated VIA Chrome9™ HD DX9 3D/2D graphics with VC1, MPEG-2, WMV9 and H.264 decoding acceleration		
<b>Expansion Slots</b>	1 x PCI slot		
<b>Onboard Serial ATA</b>	2 x SATA connectors		
<b>Onboard LAN</b>	2 x VIA VT6130 PCIe Gigabit Ethernet controllers		
<b>Onboard Audio</b>	VIA VT1708S High Definition Audio Codec		
<b>Onboard Super IO</b>	Fintek F81865F-I		
<b>Onboard I/O Connectors</b>	3 x COM pin headers (with 5V/12V select) 1 x Digital I/O pin header (GPI x 4, GPO x 4) 2 x USB 2.0 pin headers for 4 USB ports 1 x SMBus connector 1 x LPC connector 1 x S/PDIF-out connector 1 x PS/2 keyboard/mouse pin header 1 x Buzzer 1 x Dual-channel 18/24 bit LVDS (VT1636) 1 x LVDS panel power selector (5V/3.3V) 1 x LVDS inverter pin header 1 x LVDS inverter power selector (5V/12V) 1 x Front audio connector for Line-out and MIC-in 1 x Front panel pin header 2 x Fan connectors for CPU and SYS 1 x ATX power connector 1 x Clear CMOS		5 x COM pin headers (with 5V/12V select)
<b>Back Panel I/O</b>	1 x VGA port 1 x COM port 1 x Parallel port 2 x RJ-45 LAN ports 4 x USB 2.0 ports 3 x Audio jacks: Line-in, Line-out, and MIC-in (vertical, re-tasking function) 1 x PS/2 keyboard/mouse port		
<b>BIOS</b>	Award BIOS 8Mbit SPI flash memory		
<b>Operating System</b>	Windows 7, Windows XP, Windows Embedded POSReady 7, Windows Embedded Standard, Windows CE, Linux		
<b>System Monitoring &amp; Management</b>	AC power failure recovery, RTC timer to power on, Wake-on LAN, Wake-on keyboard, Wake-on mouse		
<b>Operating Temperature</b>	0°C ~ 60°C		
<b>Operating Humidity</b>	0% ~ 95% (relative humidity; non-condensing)		

## Back Panel I/O



## Accessories



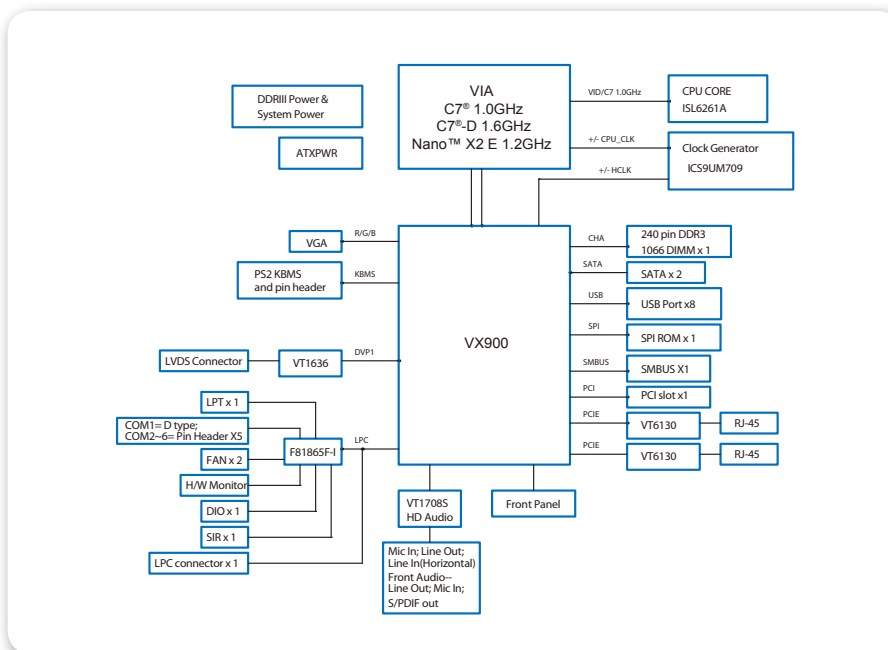
## Specifications

Model Name	VB7009-16	VB7009-10E	VB7009-12XC
Form Factor	Mini-ITX, 17 cm x 17 cm		
Compliance	CE/FCC/BSMI/RoHS		

## Ordering Information

Model Name	CPU Frequency	Description
VB7009-16	1.6GHz C7 <sup>®</sup> -D	Mini-ITX Board with 1.6GHz C7 <sup>®</sup> -D CPU, MPEG-2, WMV9/VC1, H.264, LVDS, 8 x USB, 2 x SATA, 2 x GigaLAN, 4 x COM, 1 x VGA
VB7009-10E	1.0GHz C7 <sup>®</sup>	Mini-ITX Board with 1.0GHz C7 <sup>®</sup> CPU, MPEG-2, WMV9/VC1, H.264, LVDS, 8 x USB, 2 x SATA, 2 x GigaLAN, 4 x COM, 1 x VGA
VB7009-12XC	1.2GHz Nano™ X2 E	Mini-ITX Board with 1.2GHz Nano™ X2 E CPU, MPEG-2, WMV9/VC1, H.264, LVDS, 8 x USB, 2 x SATA, 2 x GigaLAN, 6 x COM, 1 x VGA

## Block Diagram



## Packing List

Items
1 x SATA cable
1 x I/O bracket