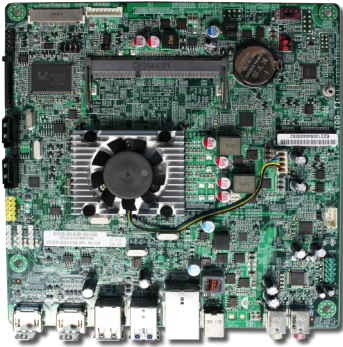


ITX-i230D

Intel® Celeron® Processor J1900 Embedded Mini-ITX motherboard



Features

- Low Profile Design
- Soldered onboard 4th Generation Intel® Celeron® Processor J1900
- Integrated Gigabit Ethernet Port
- Dual Channel 24-bit LVDS, HDMI_OUT and HDMI_IN
- Dual Independent Displays supported

System

CPU	Soldered onboard Intel® Celeron® Processor J1900 2.00GHz
Memory	1 x DDR3L SO-DIMM socket, supporting SDRAM up to 8GB
BIOS	AMI PnP Flash BIOS

I/O

Super IO Chipset	ITE IT8772E
Serial Port	1 x RS-232 port (Optional)
USB Port	7 x USB 2.0 ports 2 x USB 3.0/2.0 ports
Digital I/O	N/A
Expansion Bus	1 x Mini-card socket
Storage	2 x Serial ATA ports with 300MB/s HDD transfer rate
Ethernet Chipset	1 x Realtek RTL8111G PCIe GbE controllers
Audio Interface	Realtek ALC662+ALC113 HD Audio Codec, MIC-in/ Line-out

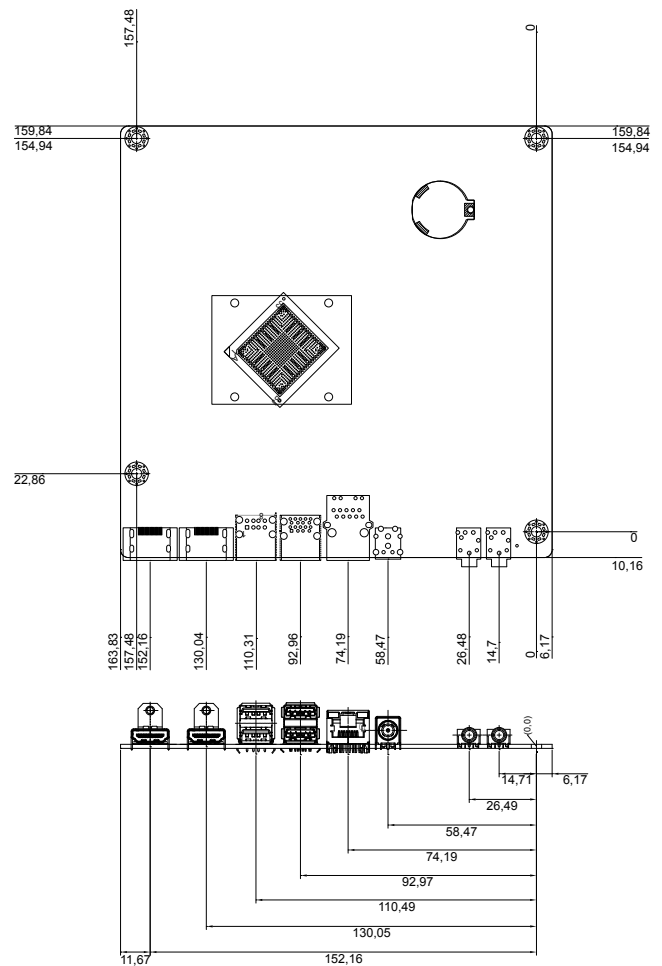
Display

Graphic Chipset	Integrated Intel® Gen7 Graphics
Graphic Interface	1 x HDMI_OUT port 1 x HDMI_IN port LCD: Dual-Channels 24-bit LVDS

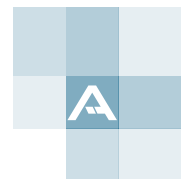
Mechanical & Environmental

Power Requirement	+19V DC
Power Consumption	0.46A@+19V (Typical)
Operating Temp.	0 ~ 60°C (32 ~ 140°F) w/ cooling fan
Operating Humidity	10 ~ 60% @ 60°C (non-condensing)
Dimension (L x W)	170 x 170 mm (6.7" x 6.7")

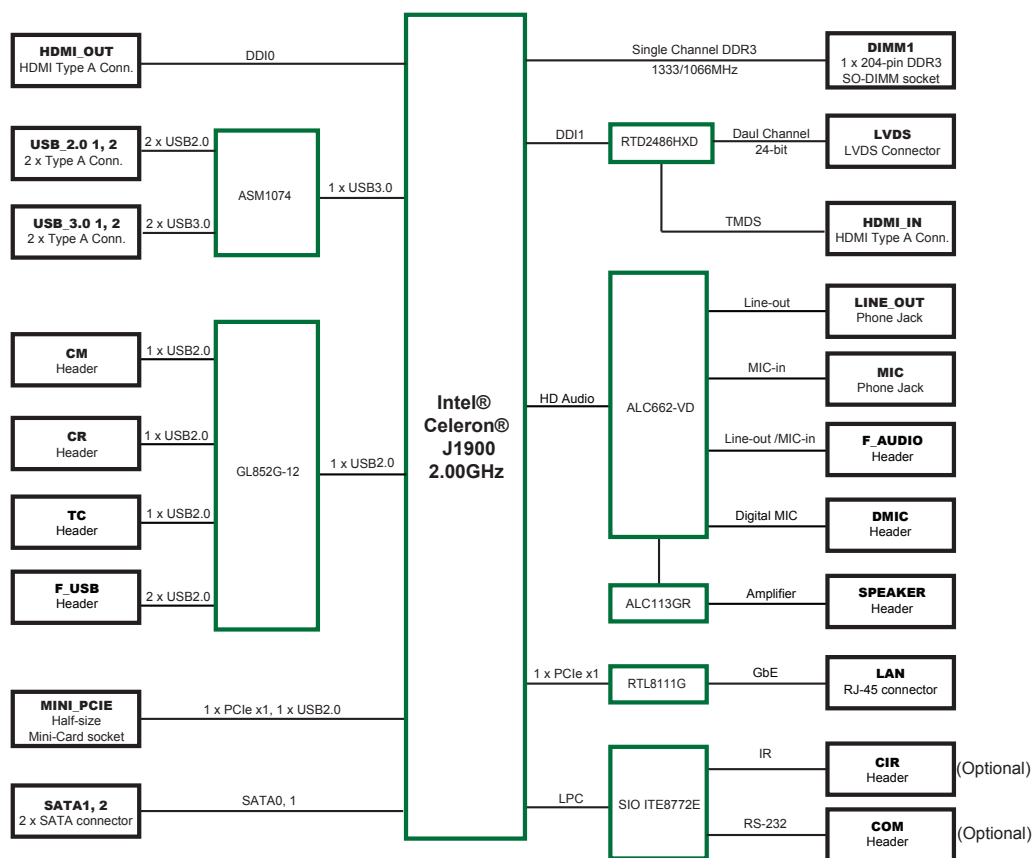
Dimensions



Unit:mm



Block Diagram



Ordering Information

ITX-i230D Intel® Celeron® Processor J1900 Embedded Mini-ITX motherboard

Optional Accessories

CBK-07-230D-00 Cable kit
 1 x Two Ports USB cable
 3 x One Port USB cables
 1 x Two Ports SATA Power cable
 2 x SATA cables