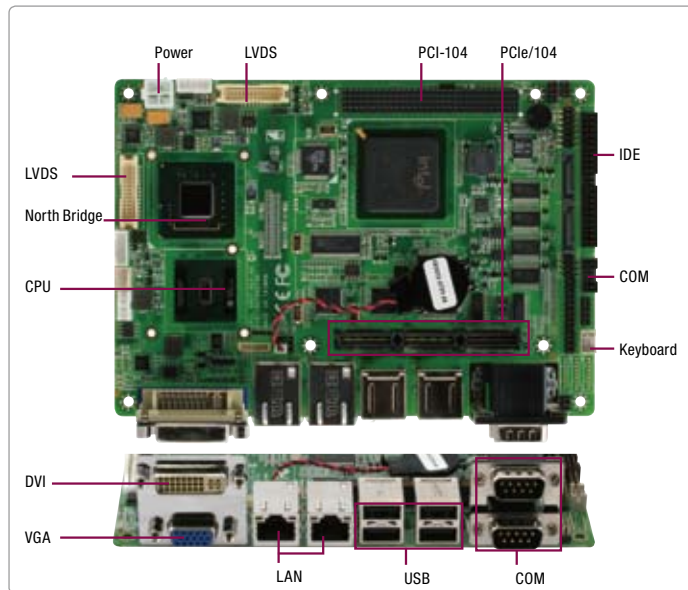


# EPIC-9457 Rev. A

EPIC Board with Onboard Intel® Atom™ N270 Processor



## Specifications

System	
Form Factor	EPIC Express Board
Processor	Onboard Intel® Atom™ N270 Processor 1.6 GHz, FSB: 533/667 MHz
System Memory	200 pin DDR2 SODIMM x 1, Max. 2 GB (DDR2 400/533)
Chipset	Intel® 945GSE + ICH7M
I/O Chipset	ITE8781
Ethernet	Intel® 82574L for 10/100/1000Base-TX, RJ-45 x 2
BIOS	Award Plug & Play SPI BIOS - 2 MB ROM
Wake On LAN	Yes
Watchdog Timer	Generates a time-out system reset
H/W Status Monitoring	Supports power supply voltages and temperature monitoring
Expansion Interface	PCI/104-Express (PCI-104 + PCIe/104)
Battery	Lithium battery
Power Requirement	+12V ~ 19V
Power Consumption (Typical)	Intel® Atom™ N270 1.6 GHz, DDR2 2 GB 1.6A@12V
Board Size	4.5" x 6.5" (115mm x 165mm)
Gross Weight	1.1 lb (0.5KG)
Operating Temperature	32°F ~ 140°F (0°C ~ 60°C)
Storage Temperature	-40°F ~ 176°F (-40°C ~ 80°C)
Operating Humidity	0% ~ 90% relative humidity, non-condensing
MTBF (Hours)	60,000
Display	
Chipset	Intel® 945GSE integrated
Memory	Shared system memory up to 224 MB with DVMT3.0
Resolutions	Up to 1920 x 1440 for CRT, Up to 1600 x 1200 for LCD
LCD Interface	24-bit dual-channel LVDS
DVI	DVI-I x 1 (optional)
I/O	
Storage	EIDE x 1 (UDMA-33 for two devices), SATA 1.5Gb/s x 2, CompactFlash™ x 1
Serial Port	RS-232 x 3, RS-232/422/485 x 1
Parallel Port	SPP/EPP/ECP Mode
USB	USB2.0 x 6
PS/2 Port	Keyboard x 1 + Mouse x 1
Digital I/O	Supports 8-bit (programmable)
Audio	Line-in, Line-out, Mic-in & CD-in
Touch Screen	Supports 4/5/8-wire resistive touch screen

## Features

- Onboard Intel® Atom™ N270 Processor
- Intel® 945GSE + ICH7M
- SODIMM DDR2 400/533, Max. 2 GB
- Gigabit Ethernet x 2
- Up to 24-bit Dual-channel LVDS, CRT, DVI (Optional)
- AC97 2.3 Codec Audio
- CompactFlash™ x 1, EIDE x 1, SATA 1.5Gb/s x 2
- USB2.0 x 6, COM x 4, 8-bit Digital I/O
- PCI/104-Express (PCI-104 + PCIe/104) Expansion
- Wide DC Voltage Input: 12V ~ 19V
- 4/5/8-wire Touch Screen Controller
- Optional RAID 0 & 1



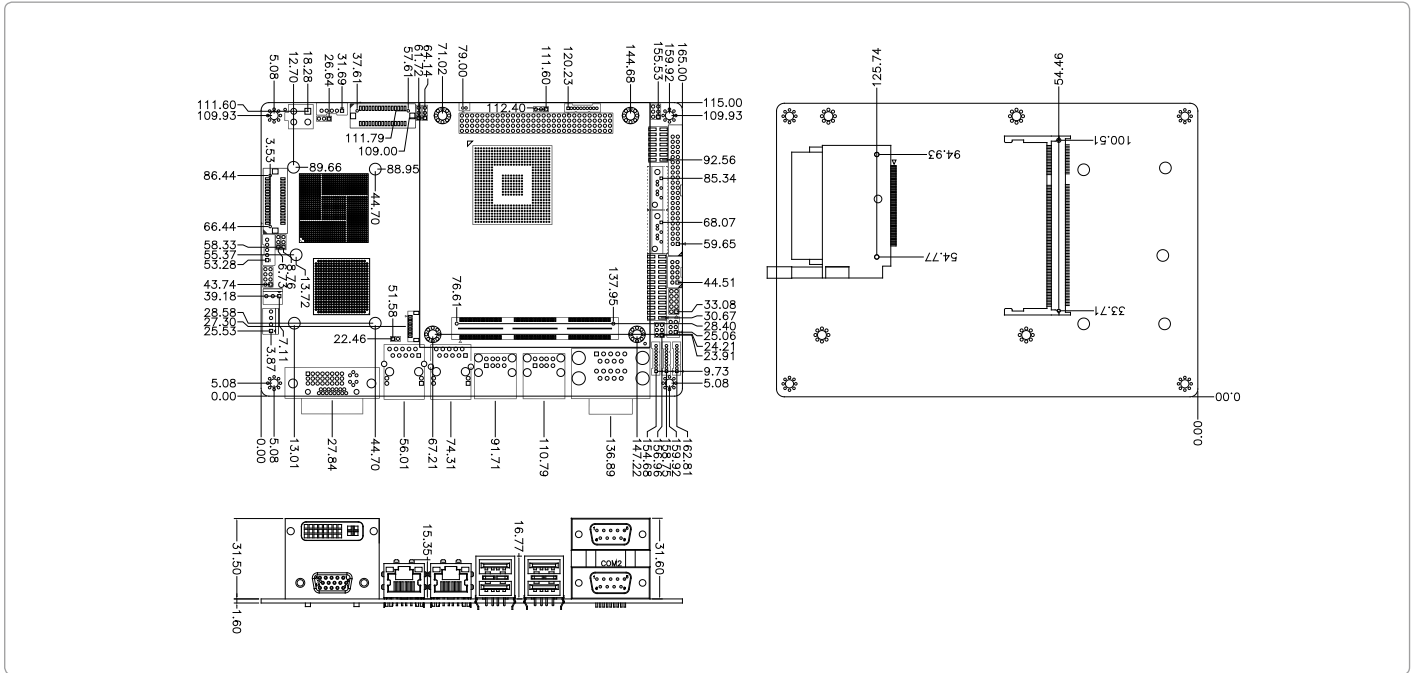
## Packing List

- 1709070500  
SATA Cable
- 1700060152  
KB/Mouse Cable
- 9657666600  
Jumper Cap
- Product CD
- EPIC-9457 Rev.A With Heatsink

# EPIC-9457 Rev. A

## Dimension

Unit: mm



## Ordering Information

Part Number	CPU	Fan/Fanless	Display	LVDS	Storage	LAN	USB	RS-232	RS-232/422/485	Expansion Slot	Power	Temp
TF-EPIC-9457-A11	Intel® Atom™ N270	Fanless	CRT + LVDS DVI + LVDS	24b, 2CH	SATA x 2 IDE x 1 CompactFlash™ x 1	GbE x 2	6	3	1	PCI/104-Express x 1	DC12V	0°C ~ 60°C

## Optional Accessories

- **1702040151**  
Power Cable, Big 4P to ATX-12V, Length 15cm
- **1709100201**  
USB Cable, Length 20cm
- **1701090150**  
COM Port Cable, 15cm
- **1700140510**  
Audio Cable, RCA Jack, Length 51cm
- **1702150152**  
SATA Power Cable, Length 15cm
- **1709070500**  
SATA Cable, 50cm
- **1701440500**  
IDE Cable for 3.5" HDD
- **1701440350**  
IDE Cable, for 2.5" HDD
- **1702040109**  
Power Output Cable, Length 10cm
- **1701260308**  
LPT Cable, Length 30cm
- **1700060152**  
Keyboard/ Mouse Cable