

EMB-945T Rev.B

Intel® Core™ 2 Duo (Merom)/
Core™ Duo/ Celeron® M (Yonah)

Processor,

Up to 2.16 GHz

Mini-ITX

Intel 82573L Ethernet

6CH AC 97 Audio & Mini PCI

Copyright Notice

This document is copyrighted, 2008. All rights are reserved. The original manufacturer reserves the right to make improvements to the products described in this manual at any time without notice.

No part of this manual may be reproduced, copied, translated, or transmitted in any form or by any means without the prior written permission of the original manufacturer. Information provided in this manual is intended to be accurate and reliable. However, the original manufacturer assumes no responsibility for its use, or for any infringements upon the rights of third parties that may result from its use.

The material in this document is for product information only and is subject to change without notice. While reasonable efforts have been made in the preparation of this document to assure its accuracy, AAEON assumes no liabilities resulting from errors or omissions in this document, or from the use of the information contained herein.

AAEON reserves the right to make changes in the product design without notice to its users.

Acknowledgments

All other products' name or trademarks are properties of their respective owners.

- Award is a trademark of Award Software International, Inc.
- CompactFlash™ is a trademark of the Compact Flash Association.
- Intel®, Core™ 2 Duo/ Core™ Duo/ Core™ Solo and Celeron® M are trademarks of Intel® Corporation.
- Microsoft Windows® is a registered trademark of Microsoft Corp.
- ITE is a trademark of Integrated Technology Express, Inc.
- IBM, PC/AT, PS/2, and VGA are trademarks of International Business Machines Corporation.
- SoundBlaster is a trademark of Creative Labs, Inc.

Please be notified that all other products' name or trademarks not be mentioned above are properties of their respective owners.

Packing List

Before you begin installing your card, please make sure that the following materials have been shipped:

- 1 1701440050 44-pin ATA33 Cable
- 1 1709070500 Serial ATA Cable
- 1 1702150150 Serial ATA Power Cable
- 1 9657666600 Jumper Cap
- 1 Quick Installation Guide
- 1 Utility CD
- 1 EMB-945T Rev.B

If any of these items should be missing or damaged, please contact your distributor or sales representative immediately.

Contents

Chapter 1 General Information

1.1 Introduction.....	1-2
1.2 Features	1-3
1.3 Specifications	1-4

Chapter 2 Quick Installation Guide

2.1 Safety Precautions	2-2
2.2 Location of Connectors and Jumpers	2-3
2.3 Mechanical Drawing	2-5
2.4 List of Jumpers	2-7
2.5 List of Connectors	2-8
2.6 Setting Jumpers	2-10
2.7 LVDS (1)-LCD (CN12) Voltage Selection (JP1).....	2-11
2.8 LVDS (2)-LCD (CN10) Voltage Selection (JP2).....	2-11
2.9 COM2 Ring/+5V/+12V Selection (JP3).....	2-11
2.10 LCD INVERTER Voltage Selection (JP4)	2-11
2.11 Clear CMOS (JP6)	2-11
2.12 CD-IN Connector (CN1).....	2-12
2.13 Digital I/O Connector (CN2)	2-12
2.14 TV-Out Connector (CN3)	2-13
2.15 Internal Keyboard Connector (CN4).....	2-13
2.16 Fan2 Connector (CN5).....	2-13
2.17 Audio 5.1 Channel / SPDIF Connector (CN6)	2-14

2.18 Internal Mouse Connector (CN7)	2-14
2.19 LCD Inverter Connector (CN8)	2-14
2.20 LVDS (2)-LCD Connector (CN10).....	2-14
2.21 DVI Connector (CN11)	2-15
2.22 LVDS (1)-LCD Connector (CN12).....	2-16
2.23 COM6 RS-232 Serial Port Connector (CN13)	2-16
2.24 COM3 RS-232 Serial Port Connector (CN14)	2-16
2.25 Fan1 Connector (CN15).....	2-17
2.26 COM5 RS-232 Serial Port Connector (CN16)	2-17
2.27 COM4 RS-232 Serial Port Connector (CN17).....	2-17
2.28 IrDA Port Connector (CN18)	2-18
2.29 ATX Power Connector(CN19).....	2-18
2.30 USB Connector (CN20).....	2-18
2.31 USB Connector (CN21).....	2-19
2.32 EIDE Connector (CN22).....	2-19
2.33 Front Panel Connector (CN23)	2-20
2.34 PCI-Express Slot (CN25)	2-20
2.35 Audio Speaker Output Connector (CN26)	2-22
2.36 COM2 RS-232/422/485 Serial Port Connector (PCON1).....	2-22

Chapter 3 Award BIOS Setup

3.1 System Test and Initialization.	3-2
3.2 Award BIOS Setup	3-3

Chapter 4 Driver Installation

4.1 Installation.....	4-3
-----------------------	-----

Appendix A Programming The Watchdog Timer

A.1 Programming	A-2
-----------------------	-----

A.2 ITE 8712 Watchdog Timer Initial Program.....	A-6
--	-----

Appendix B I/O Information

B.1 I/O Address Map	B-2
---------------------------	-----

B.2 Memory Address Map.....	B-3
-----------------------------	-----

B.3 IRQ Mapping Chart.....	B-4
----------------------------	-----

B.4 DMA Channel Assignments.....	B-4
----------------------------------	-----

Appendix C Mating Connector

C.1 List of Mating Connectors and Cables.....	C-2
---	-----

Chapter

1

**General
Information**

1.1 Introduction

The EMB-945T Rev.B adopts the latest Intel® Core™ 2 Duo (Merom)/ Core™ Duo/ Core™ Solo/ Celeron® M (Yonah) processors and Mobile Intel® 945GM Express chipset for better power-management capabilities and enhanced performance. EMB-945T Rev.B with mobile-optimized Intel dual-core processors is the latest embedded motherboard designed to cope with increasingly heavily work-loaded embedded systems found in POS (Point-of-Sale) machines, automated kiosks, medical instruments, advanced automation for buildings and homes, and gaming machines.

The EMB-945T Rev.B features one PCI slot, one PCI-E slot, one Mini PCI slot, six COM ports, six USB 2.0 ports, multiple Digital I/O ports, and Type II CFD storage, providing versatile expansion options for many embedded applications.

The Front Side Bus of EMB-945T Rev.B is up to 667MHz and graphic performance has been enhanced from 20 to 30%. In addition, the EMB-945T Rev.B supports DX9L appropriate to the DirectX and LVD/iDCT MPEG2 Hardware Decode.

1.2 Features

- Socket 478 or Onboard Intel[®] Core™ 2 Duo (Merom)/ Core™ Duo/ Core™ Solo/ Celeron M (Yonah) Processors up to 2.0 GHz
- Two SODIMM Slots Support DDRII Memory up to 4GB
- Up to 24-bit Dual-channel LVDS LCD, Shared Memory up to 224MB with DVMT
- Intel 82573L Gigabit Ethernet
- 6CH AC97 Audio, Type II CompactFlash
- One PCI Slot, Two PCI-E [x1] Slots (Optional) and One Mini PCI Socket
- Six Serial Ports, One Parallel Port, Two SATA Slots, One ATA33, Six USB 2.0 Ports and Digital I/O
- LCD Inverter Connector with Brightness Control
- Enhanced Intel[®] SpeedStep Technology

1.3 Specifications

System

- Processor Supports Socket 478 or onboard Intel[®] Core 2 Duo (Merom)/ Core Duo/ Core Solo/ Celeron M (Yonah) Processors up to 2.16 GHz with FSB 533/667 MHz
- System Memory 200-pin DDR II SODIMM Socket x 2, total up to 4GB
- Chipset Intel[®] 945GM + ICH7M
- I/O Chipset ITE 8712 + Fintek F81216D
- Ethernet Intel 82573L
10/100/1000Base-TX, RJ-45 x 1
- BIOS Award Plug & Play BIOS – 1MB ROM
- Watchdog Timer ITE 8712
- H/W Status Monitoring Supports power supply voltages, fan speed and temperature monitoring
- Expansion Interface PCI x 1, PCI-E [x1] x 2 (optional), Mini PCI x 1
- Power Requirement ATX (+3.3V, +5V, +12V)

- Power Consumption T7400 2.16GHz, DDRII 667 1GB
+12V @ 2.59A, +5V @ 2.88A, +3.3V @ 0.6A
- Board Size 6.7"(L) x 6.7"(W) (170 mm x 170 mm)
- Operating Temperature 32°F~ 140°F (0°C ~ 60°C)
- Storage Temperature -40°F~ 176°F (-40°C ~ 80°C)
- Operating Humidity 0%~90% relative humidity, non-condensing

Display: Supports CRT/LCD, CRT/TV and CRT/DVI simultaneous display and dual view

- Chipset Intel[®] 945GM
- VGA/LCD Controller
 1. Intel[®] 945GM integrated Graphics, Shared memory up to 224MB with DVMT, LCD supports 24-bit dual-channel LVDS
 2. Chrontel 7307 for DVI support
 3. Chrontel 7308 for 24-bit dual-channel LVDS support
- TV-out Supports NTSC and PAL

standard

I/O

- Storage EIDE x 1 (UDMA33), SATA x 2, Type II CompactFlash x 1
- Serial Port RS-232 x 5, RS-232/422/485 x 1
- IrDA One IrDA Tx/Rx header
- Audio Realtek ALC655 CODEC
MIC-In/ Line-In/ Line-out, S/PDIF In/Out
- USB Six USB 2.0 Ports, Two 5x2 pin header for Internal, Two Type-A USB connector for External
- Parallel Port Supports SPP/ EPP/ ECP mode
- K/B and Mouse Mini-DIN PS/2 Keyboard and Mouse connector x1
- Digital I/O Supports 8-bit (Programmable)

Chapter

2

Quick Installation Guide

Notice:

The Quick Installation Guide is derived from Chapter 2 of user manual. For other chapters and further installation instructions, please refer to the user manual CD-ROM that came with the product.



2.1 Safety Precautions

Warning!

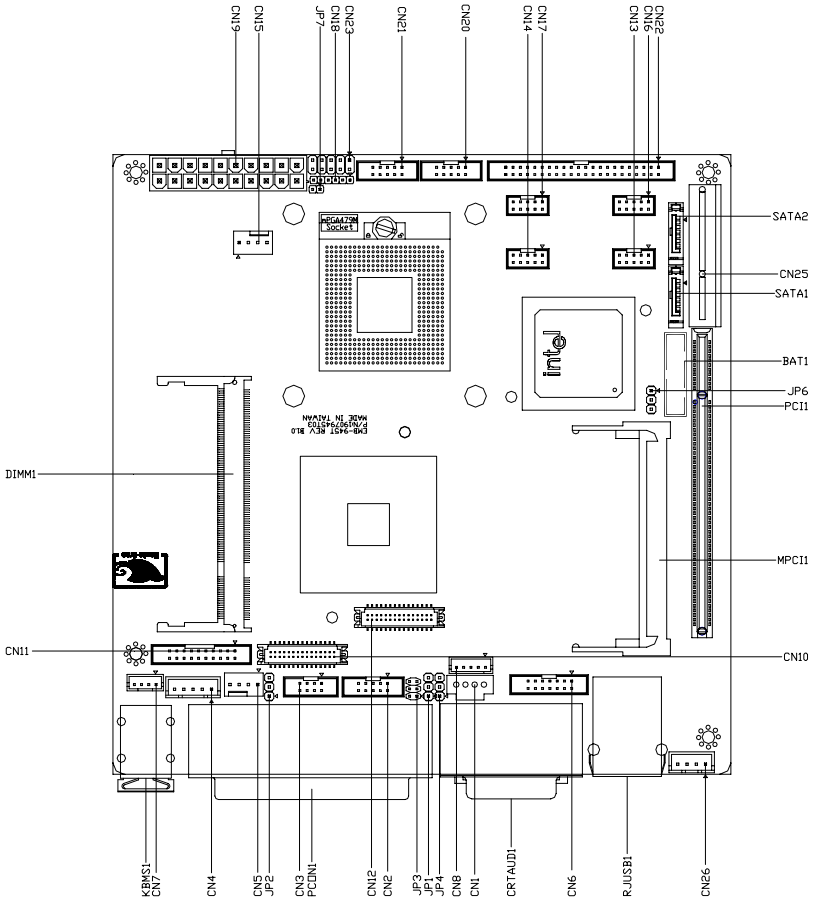
Always completely disconnect the power cord from your board whenever you are working on it. Do not make connections while the power is on, because a sudden rush of power can damage sensitive electronic components.

Caution!

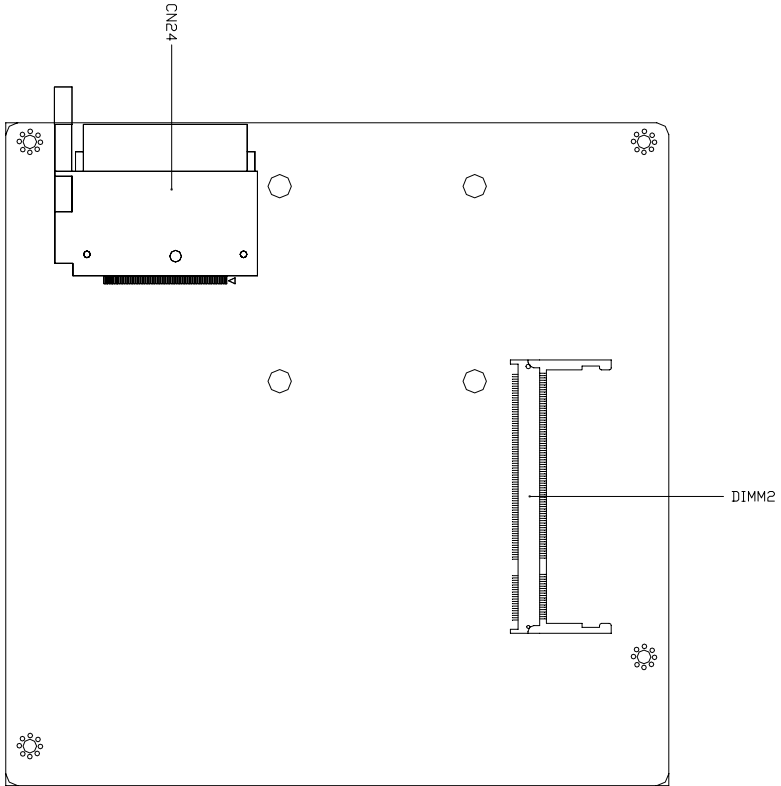
Always ground yourself to remove any static charge before touching the board. Modern electronic devices are very sensitive to static electric charges. Use a grounding wrist strap at all times. Place all electronic components on a static-dissipative surface or in a static-shielded bag when they are not in the chassis

2.2 Location of Connectors and Jumpers

Component Side

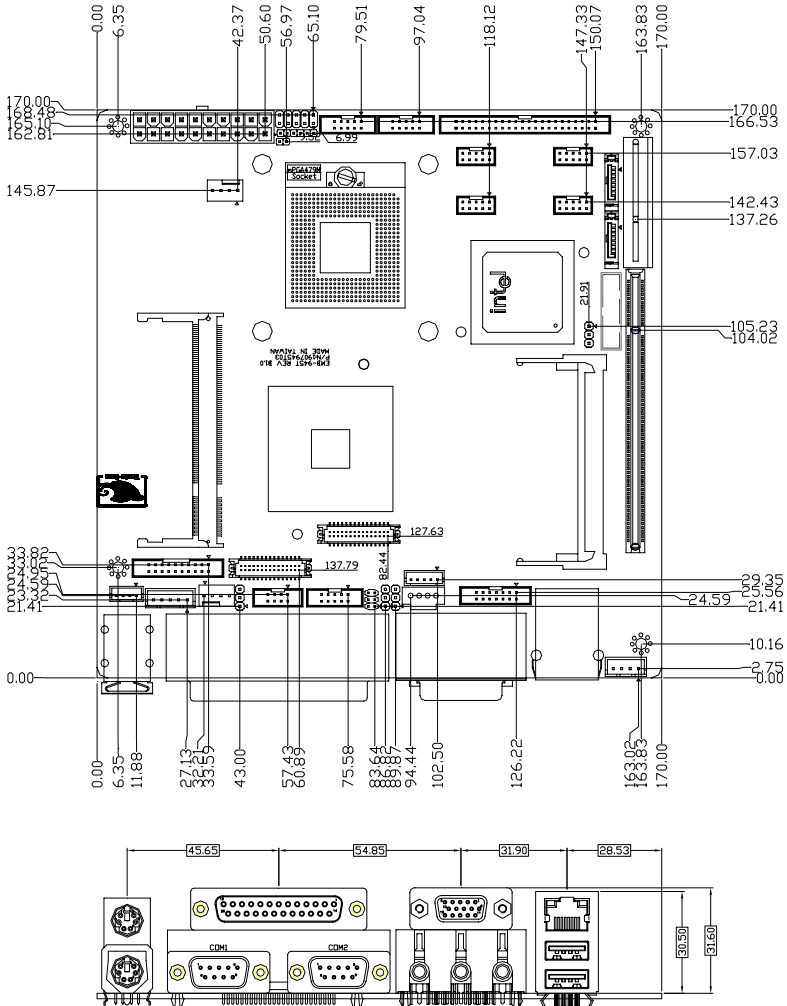


Solder Side

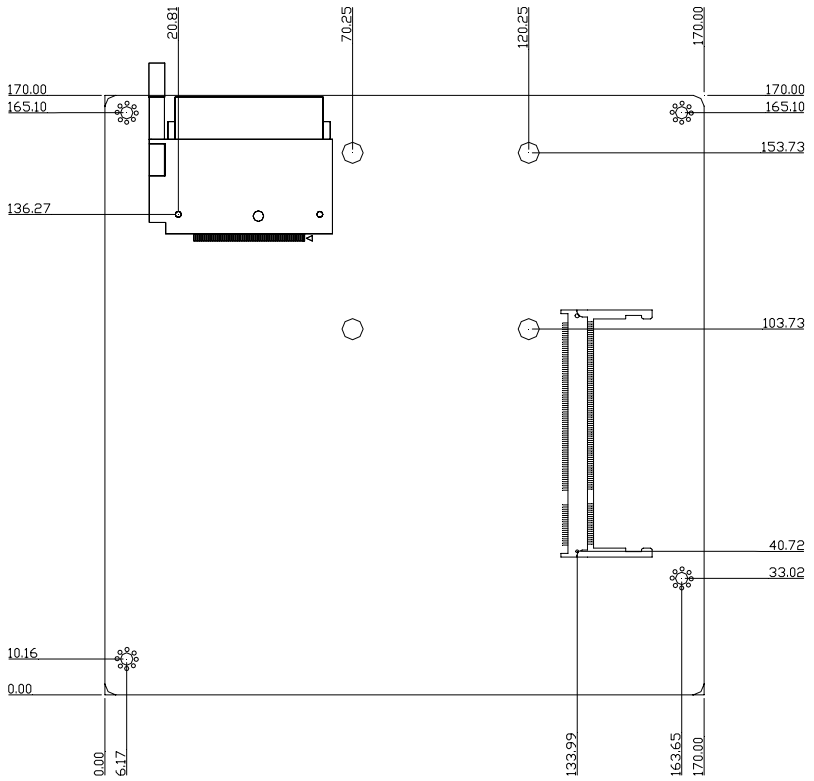


2.3 Mechanical Drawing

Component Side



Solder Side



2.4 List of Jumpers

The board has a number of jumpers that allow you to configure your system to suit your application.

The table below shows the function of each of the board's jumpers:

Jumpers

Label	Function
JP1	LVDS(1)-LCD(CN12) Voltage Selection
JP2	LVDS(2)-LCD(CN10) Voltage Selection
JP3	COM2 Ring/+5V/+12V Selection
JP4	LCD INVERTER Voltage Selection
JP6	Clear CMOS

2.5 List of Connectors

The board has a number of connectors that allow you to configure your system to suit your application.

The table below shows the function of each of the board's connectors:

Connectors

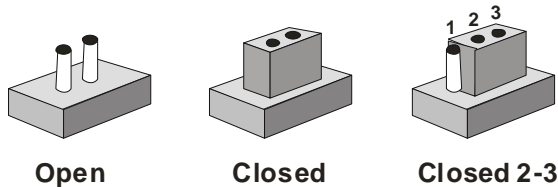
Label	Function
CN1	CD-IN Connector
CN2	Digital I/O Connector
CN3	TV-Out Connector
CN4	Internal Keyboard Connector
CN5	Fan2 Connector
CN6	Audio 5.1 Channel / SPDIF Connector
CN7	Internal Mouse Connector
CN8	LCD Inverter Connector
CN10	LVDS (2)-LCD Connector for 24/48 bit
CN11	DVI Connector
CN12	LVDS (1)-LCD Connector for 18/36 bit
CN13	COM6 RS-232 Serial Port Connector
CN14	COM3 RS-232 Serial Port Connector
CN15	Fan1 Connector
CN16	COM5 RS-232 Serial Port Connector
CN17	COM4 RS-232 Serial Port Connector
CN18	IrDA Connector
CN19	ATX Power Connector
CN20	USB Connector
CN21	USB Connector
CN22	EIDE Connector
CN23	Front Panel Connector
CN24	CompactFlash Slot

CN25	PCI Express Slot
CN26	Audio Speaker Output
CRTAUD1	VGA Display Connector / Audio Connector
KBMS1	PS2 Keyboard / Mouse Connector
PCON1	COM1 RS-232 & COM2 RS-232/422/485 Serial Port Connector / LPT Port Connector
RJUSB1	USB Connector / 10 /100 /1000 Base-TX Ethernet Connector
MPCI1	Mini PCI Slot
PCI1	PCI Slot
SATA1	Primary Serial ATA Connector
SATA2	Secondary Serial ATA Connector
DIMM1	DDR2 SODIMM Slot
DIMM2	DDR2 SODIMM Slot

2.6 Setting Jumpers

You configure your card to match the needs of your application by setting jumpers. A jumper is the simplest kind of electric switch. It consists of two metal pins and a small metal clip (often protected by a plastic cover) that slides over the pins to connect them. To “close” a jumper you connect the pins with the clip.

To “open” a jumper you remove the clip. Sometimes a jumper will have three pins, labeled 1, 2 and 3. In this case you would connect either pins 1 and 2 or 2 and 3.



A pair of needle-nose pliers may be helpful when working with jumpers.

If you have any doubts about the best hardware configuration for your application, contact your local distributor or sales representative before you make any change.

Generally, you simply need a standard cable to make most connections.

2.7 LVDS(1)-LCD(CN12) Voltage Selection (JP1)

JP1	Function
1-2	+5V
2-3	+3.3V (Default)

2.8 LVDS (2)-LCD(CN10) Voltage Selection (JP2)

JP2	Function
1-2	+5V
2-3	+3.3V (Default)

2.9 COM2 Ring/+5V/+12V Selection (JP3)

JP3	Function
1-2	+12V
3-4	+5V
5-6	Ring (Default)

2.10 LCD INVERTER Voltage Selection (JP4)

JP4 LCD	Function
1-2	+5V (Default)
2-3	+12V

2.11 Clear CMOS (JP6)

JP6	Function
1-2	Protected (Default)
2-3	Clear

2.12 CD-IN Connector (CN1)

Pin	Signal
1	CD_IN_L
2	CD_GND
3	CD_GND
4	CD_IN_R

2.13 Digital I/O Connector (CN2)

This connector offers 4-pair of digital I/O functions and address is set in BIOS. The default address is 2A1H. The pin definitions are illustrated below:

Pin	Signal	Pin	Signal
1	Digital-IN/ OUT	2	Digital-IN/OUT
3	Digital-IN/ OUT	4	Digital-IN/ OUT
5	Digital-IN/ OUT	6	Digital-IN/ OUT
7	Digital-IN/ OUT	8	Digital-IN/ OUT
9	+5V	10	GND

The pin definitions and registers mapping are illustrated below:

4 in / 4 out

Pin8	Pin7	Pin6	Pin5	Pin4	Pin3	Pin2	Pin1
GPI 27	GPI 26	GPI 25	GPI 24	GPO 23	GPO 22	GPO 21	GPO 20
MSB						LSB	

8 in

Pin8	Pin7	Pin6	Pin5	Pin4	Pin3	Pin2	Pin1
GPI 27	GPI 26	GPI 25	GPI 24	GPI 23	GPI 22	GPI 21	GPI 20
MSB						LSB	

8 out

Pin8	Pin7	Pin6	Pin5	Pin4	Pin3	Pin2	Pin1
GPO 27	GPO 26	GPO 25	GPO 24	GPO 23	GPO 22	GPO 21	GPO 20
MSB							LSB

2.14 TV_Out Connector (CN3)

Pin	Signal	Pin	Signal
1	Y	2	CVBS
3	GND	4	GND
5	C	6	N.C.
7	GND	8	N.C.

2.15 Internal Keyboard Connector (CN4)

Pin	Signal
1	KB_CLK
2	KB_DATA
3	N.C.
4	GND
5	+5V

2.16 Fan2 Connector (CN5)

Pin	Signal
1	GND
2	+12V
3	Speed Sense
4	Speed Control

2.17 Audio 5.1 Channel / SPDIF Connector (CN6)

Pin	Signal	Pin	Signal
1	Front-OUT-R	2	GND
3	Front-OUT-L	4	GND
5	Surr-OUT-R	6	GND
7	Surr-OUT-L	8	GND
9	LFE-OUT	10	GND
11	CNE-OUT	12	GND
13	SPDIF-OUT	14	SPDIF-IN

2.18 Internal Mouse Connector (CN7)

Pin	Signal
1	MS_CLK
2	MS_DATA
3	GND
4	+5V

2.19 LCD Inverter Connector (CN8)

Pin	Signal
1	VCC of LCD inverter (+5V/+12V)
2	Adjust backlight
3	GND
4	GND
5	ENBKL

2.20 LVDS (2)-LCD Connector (CN10)

Pin	Signal	Pin	Signal
1	ENBKL	2	N.C.

3	PPVCC	4	GND
5	LVDS1_TXCLK-	6	LVDS1_TXCLK+
7	PPVCC	8	GND
9	LVDS1_TX0-	10	LVDS1_TX0+
11	LVDS1_TX1-	12	LVDS1_TX1+
13	LVDS1_TX2-	14	LVDS1_TX2+
15	LVDS1_TX3-	16	LVDS1_TX3+
17	I2C_DATA	18	I2C_CLK
19	LVDS2_TX0-	20	LVDS2_TX0+
21	LVDS2_TX1-	22	LVDS2_TX1+
23	LVDS2_TX2-	24	LVDS2_TX2+
25	LVDS2_TX3-	26	LVDS2_TX3+
27	PPVCC	28	GND
29	LVDS2_TXCLK-	30	LVDS2_TXCLK+

2.21 DVI Connector (CN11)

Pin	Signal	Pin	Signal
1	DVI_TX1+	2	LVDS_TX1-
3	GND	4	GND
5	DVI_TXCLK+	6	DVI_TXCLK-
7	GND	8	+5V
9	HotPlug_Detect	10	+5V
11	DVI_TX2+	12	DVI_TX2-
13	GND	14	GND
15	DVI_TX0+	16	DVI_TX0-
17	N.C.	18	N.C.
19	I2C_DATA	20	I2C_CLK

2.22 LVDS(1)-LCD Connector (CN12)

Pin	Signal	Pin	Signal
1	ENBKL	2	N.C.
3	PPVCC	4	GND
5	LVDS1_TXCLK-	6	LVDS1_TXCLK+
7	PPVCC	8	GND
9	LVDS1_TX0-	10	LVDS1_TX0+
11	LVDS1_TX1-	12	LVDS1_TX1+
13	LVDS1_TX2-	14	LVDS1_TX2+
15	N.C.	16	N.C.
17	I2C_DATA	18	I2C_CLK
19	LVDS2_TX0-	20	LVDS2_TX0+
21	LVDS2_TX1-	22	LVDS2_TX1+
23	LVDS2_TX2-	24	LVDS2_TX2+
25	N.C.	26	N.C.
27	PPVCC	28	GND
29	LVDS2_TXCLK-	30	LVDS2_TXCLK+

2.23 COM6 RS-232 Serial Port Connector (CN13)

Pin	Signal	Pin	Signal
1	DCD	2	RXD
3	TXD	4	DTR
5	GND	6	DSR
7	RTS	8	CTS
9	RI	10	N.C.

2.24 COM3 RS-232 Serial Port Connector (CN14)

Pin	Signal	Pin	Signal
1	DCD	2	RXD

3	TXD	4	DTR
5	GND	6	DSR
7	RTS	8	CTS
9	RI	10	N.C.

2.25 Fan1 Connector (CN15)

Pin	Signal
1	GND
2	+12V
3	Speed Sense
4	Speed Control

2.26 COM5 RS-232 Serial Port Connector (CN16)

Pin	Signal	Pin	Signal
1	DCD	2	RXD
3	TXD	4	DTR
5	GND	6	DSR
7	RTS	8	CTS
9	RI	10	N.C.

2.27 COM4 RS-232 Serial Port Connector (CN17)

Pin	Signal	Pin	Signal
1	DCD	2	RXD
3	TXD	4	DTR
5	GND	6	DSR
7	RTS	8	CTS
9	RI	10	N.C.

2.28 IrDA Connector (CN18)

Pin	Signal
1	+5V
2	N.C.
3	IRRX
4	GND
5	IRTX
6	N.C.

2.29 ATX Power Connector (CN19)

Pin	Signal	Pin	Signal
1	+3.3V	11	+3.3V
2	+3.3V	12	-12V
3	GND	13	GND
4	+5V	14	PS_ON
5	GND	15	GND
6	+5V	16	GND
7	GND	17	GND
8	POWER OK	18	-5V
9	+5VSB	19	+5V
10	+12V	20	+5V

2.30 USB Connector (CN20)

Pin	Signal	Pin	Signal
1	+5V	2	GND
3	USBD1-	4	GND
5	USBD1+	6	USBD2+
7	GND	8	USBD2-

9	GND	10	+5V
---	-----	----	-----

2.31 USB Connector (CN21)

Pin	Signal	Pin	Signal
1	+5V	2	GND
3	USBD1-	4	GND
5	USBD1+	6	USBD2+
7	GND	8	USBD2-
9	GND	10	+5V

2.32 EIDE Connector (CN22)

Pin	Signal	Pin	Signal
1	IDE RESET	2	GND
3	DATA7	4	DATA8
5	DATA6	6	DATA9
7	DATA5	8	DATA10
9	DATA4	10	DATA11
11	DATA3	12	DATA12
13	DATA2	14	DATA13
15	DATA1	16	DATA14
17	DATA0	18	DATA15
19	GND	20	N.C.
21	REQ	22	GND
23	IO WRITE	24	GND
25	IO READ	26	GND
27	IO READY	28	GND
29	DACK	30	GND
31	IRQ14	32	N.C.

33	ADDR1	34	UDMA DETECT
35	ADDR0	36	ADDR2
37	CS#1	38	CS#3
39	LED	40	GND
41	+5V	42	+5V
43	GND	44	N.C.

2.33 Front Panel Connector (CN23)

Pin	Signal	Pin	Signal
1	Power On Button (-)	2	Power On Button (+)
3	IDE LED (-)	4	IDE LED (+)
5	External Buzzer (-)	6	External Buzzer (+)
7	Power LED (-)	8	Power LED (+)
9	Reset Switch (-)	10	Reset Switch (+)

2.34 PCI-Express Slot (CN25)

Pin	Signal	Pin	Signal
A1	N.C.	B1	+12V
A2	+12V	B2	+12V
A3	+12V	B3	+12V
A4	GND	B4	GND
A5	N.C.	B5	SMBCLK
A6	N.C.	B6	SMBDAT
A7	N.C.	B7	GND
A8	N.C.	B8	+3.3V
A9	+3.3V	B9	N.C.
A10	+3.3V	B10	+3.3VSB

A11	PCIE_RESET#	B11	PCIE_WAKE#
A12	GND	B12	N.C.
A13	PCIE1_CLKP	B13	GND
A14	PCIE1_CLKN	B14	PCIE1_TXP
A15	GND	B15	PCIE1_TXN
A16	PCIE1_RXP	B16	GND
A17	PCIE1_RXN	B17	N.C.
A18	GND	B18	GND
A19	N.C.	B19	PCIE2_TXP
A20	GND	B20	PCIE2_TXN
A21	PCIE2_RXP	B21	GND
A22	PCIE2_RXN	B22	GND
A23	GND	B23	PCIE3_TXP
A24	GND	B24	PCIE3_TXN
A25	PCIE3_RXP	B25	GND
A26	PCIE3_RXN	B26	GND
A27	GND	B27	PCIE4_TXP
A28	GND	B28	PCIE4_TXN
A29	PCIE4_RXP	B29	GND
A30	PCIE4_RXN	B30	PCIE2_CLKN
A31	GND	B31	N.C.
A32	PCIE2_CLKP	B32	GND

2.35 Audio Speaker Output Connector (CN26)

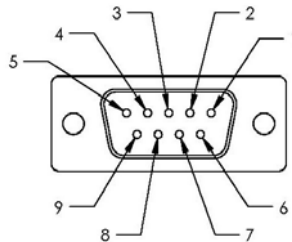
Pin	Signal	Pin	Signal
1	SPK-R+	2	SPK-R-
3	SPK-L+	4	SPK-L-

2.36 COM2 RS-232/422/485 Serial Port Connector (PCON1)

COM2 RS-232/422/485 selection for EMB-945 Rev.B is set in BIOS setting as following:

Entering BIOS Setting Menu: Choose "Integrated Peripherals → Super IO device → COM2 select". (Default setting is at "RS-232")

Different devices implement the RS-232/422/485 standard in different ways. If you have problems with a serial device, check the pin assignments below for the connector.



Pin	Signal	Pin	Signal
1	DCD (422TXD-/485DATA-)	2	RXD (422RXD+)
3	TXD (422TXD+/485DATA+)	4	DTR (422RXD-)
5	GND	6	DSR
7	RTS	8	CTS
9	RI	10	N.C.

Below Table for China RoHS Requirements

产品中有毒有害物质或元素名称及含量

AAEON Main Board/ Daughter Board/ Backplane

部件名称	有毒有害物质或元素					
	铅 (Pb)	汞 (Hg)	镉 (Cd)	六价铬 (Cr(VI))	多溴联苯 (PBB)	多溴二苯醚 (PBDE)
印刷电路板 及其电子组件	×	○	○	○	○	○
外部信号 连接器及线材	×	○	○	○	○	○
<p>O: 表示该有毒有害物质在该部件所有均质材料中的含量均在 SJ/T 11363-2006 标准规定的限量要求以下。</p> <p>X: 表示该有毒有害物质至少在该部件的某一均质材料中的含量超出 SJ/T 11363-2006 标准规定的限量要求。</p> <p>备注: 此产品所标示之环保使用期限, 系指在一般正常使用状况下。</p>						

Chapter

3

**Award
BIOS Setup**

3.1 System Test and Initialization

These routines test and initialize board hardware. If the routines encounter an error during the tests, you will either hear a few short beeps or see an error message on the screen. There are two kinds of errors: fatal and non-fatal. The system can usually continue the boot up sequence with non-fatal errors. Non-fatal error messages usually appear on the screen along with the following instructions:

Press <F1> to RESUME

Write down the message and press the F1 key to continue the boot up sequence.

System configuration verification

These routines check the current system configuration against the values stored in the CMOS memory. If they do not match, the program outputs an error message. You will then need to run the BIOS setup program to set the configuration information in memory.

There are three situations in which you will need to change the CMOS settings:

1. You are starting your system for the first time
2. You have changed the hardware attached to your system
3. The CMOS memory has lost power and the configuration information has been erased.

The EMB-945T Rev.B CMOS memory has an integral lithium battery backup for data retention. However, you will need to replace the complete unit when it finally runs down.

3.2 Award BIOS Setup

Awards BIOS ROM has a built-in Setup program that allows users to modify the basic system configuration. This type of information is stored in battery-backed CMOS RAM so that it retains the Setup information when the power is turned off.

Entering Setup

Power on the computer and press immediately. This will allow you to enter Setup.



Standard CMOS Features

Use this menu for basic system configuration. (Date, time, IDE, etc.)

Advanced BIOS Features

Use this menu to set the advanced features available on your system.

Advanced Chipset Features

Use this menu to change the values in the chipset registers and optimize your system performance.

Integrated Peripherals

Use this menu to specify your settings for integrated peripherals. (Primary slave, secondary slave, keyboard, mouse etc.)

Power Management Setup

Use this menu to specify your settings for power management. (HDD power down, power on by ring, KB wake up, etc.)

PnP/PCI Configurations

This entry appears if your system supports PnP/PCI.

PC Health Status

This menu allows you to set the shutdown temperature for your system.

Frequency/Voltage Control

Use this menu to specify your settings for auto detect DIMM/PCI clock and spread spectrum.

Load Fail-Safe Defaults

Use this menu to load the BIOS default values for the minimal/stable performance for your system to operate.

Load Optimized Defaults

Use this menu to load the BIOS default values that are factory settings for optimal performance system operations. While AWARD has designated the custom BIOS to maximize performance, the factory has the right to change these defaults to meet their needs.

Set Supervisor/User Password

Use this menu to set Supervisor/User Passwords.

Save and Exit Setup

Save CMOS value changes to CMOS and exit setup.

Exit Without Saving

Abandon all CMOS value changes and exit setup.

You can refer to the “AAEON BIOS Item Description.pdf” file in the CD for the meaning of each setting in this chapter.

Chapter

4

**Driver
Installation**

The EMB-945T Rev.B comes with a AutoRun CD-ROM that contains all drivers and utilities that can help you to install the driver automatically.

Insert the driver CD, the driver CD-title will auto start and show the installation guide. If not, please follow the sequence below to install the drivers.

Follow the sequence below to install the drivers:

Step 1 – Install Chip Driver

Step 2 – Install VGA Driver

Step 3 – Install LAN Driver

Step 4 – Install Audio Driver

USB 2.0 Drivers are available for download using Windows[®] Update for both Windows[®] XP and Windows[®] 2000. For additional information regarding USB 2.0 support in Windows[®] XP and Windows[®] 2000, please visit www.microsoft.com/hwdev/usb/.

Please read instructions below for further detailed installations.

4.1 Installation:

Insert the EMB-945T Rev.B CD-ROM into the CD-ROM drive. And install the drivers from Step 1 to Step 4 in order.

Step 1 – Install Chip Driver

1. Click on the **Step 1-chip** folder and then double click on the **Setup.exe**
2. Follow the instructions that the window shows
3. The system will help you install the driver automatically
4. Please re-start your computer

Step 2 – Install VGA Driver

1. Click on the **Step 2-vga** folder and choose the folder your system is
2. Double click on **.exe** file located in each OS folder
3. Follow the instructions that the window shows
4. The system will help you install the driver automatically
5. Please re-start your computer

Step 3 – Install LAN Driver

1. Click on the **Step 3-LAN driver** folder
2. Select the **Windows** folder and then double click on **Autorun.exe**
3. Follow the instructions that the window shows
4. The system will help you install the driver automatically

Step 4 – Install Audio Driver

1. Click on the **Step 4- AC97** folder and choose the folder your system is
2. Double click on **.exe** file located in each OS folder
3. Follow the instructions that the window shows
4. The system will help you install the driver automatically

Note:

Under the Window OS environment, if the CRT connector is connected to display monitor by the data switch device, the user need to set the color and resolution from Intel Graphic utility (VGA driver) instead of setting from the control panel in case of the wrong display appearance.

Appendix

A

Programming the Watchdog Timer

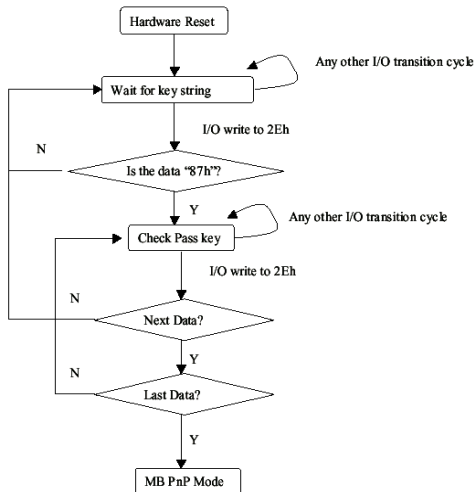
A.1 Programming

EMB-945T Rev.B utilizes ITE 8712 chipset as its watchdog timer controller.

Below are the procedures to complete its configuration and the AAeon initial watchdog timer program is also attached based on which you can develop customized program to fit your application.

Configuring Sequence Description

After the hardware reset or power-on reset, the ITE 8712 enters the normal mode with all logical devices disabled except KBC. The initial state (enable bit) of this logical device (KBC) is determined by the state of pin 121 (DTR1#) at the falling edge of the system reset during power-on reset.



There are three steps to complete the configuration setup: (1) Enter the MB PnP Mode; (2) Modify the data of configuration registers; (3) Exit the MB PnP Mode. Undesired result may occur if the MB PnP Mode is not exited normally.

(1) Enter the MB PnP Mode

To enter the MB PnP Mode, four special I/O write operations are to be performed during Wait for Key state. To ensure the initial state of the key-check logic, it is necessary to perform four write operations to the Special Address port (2EH). Two different enter keys are provided to select configuration ports (2Eh/2Fh) of the next step.

	Address Port	Data Port
87h, 01h, 55h, 55h:	2Eh	2Fh

(2) Modify the Data of the Registers

All configuration registers can be accessed after entering the MB PnP Mode. Before accessing a selected register, the content of Index 07h must be changed to the LDN to which the register belongs, except some Global registers.

(3) Exit the MB PnP Mode

Set bit 1 of the configure control register (Index=02h) to 1 to exit the MB PnP Mode.

WatchDog Timer Configuration Registers

LDN	Index	R/W	Reset	Configuration Register or Action
All	02H	W	N/A	Configure Control
07H	71H	R/W	00H	WatchDog Timer Control Register
07H	72H	R/W	00H	WatchDog Timer Configuration Register
07H	73H	R/W	00H	WatchDog Timer Time-out Value Register

Configure Control (Index=02h)

This register is write only. Its values are not sticky; that is to say, a hardware reset will automatically clear the bits, and does not require the software to clear them.

Bit	Description
7-2	Reserved
1	Returns to the Wait for Key state. This bit is used when the configuration sequence is completed
0	Resets all logical devices and restores configuration registers to their power-on states.

WatchDog Timer Control Register (Index=71h, Default=00h)

Bit	Description
7	WDT is reset upon a CIR interrupt
6	WDT is reset upon a KBC (mouse) interrupt
5	WDT is reset upon a KBC (keyboard) interrupt
4	WDT is reset upon a read or a write to the Game Port base address
3-2	Reserved
1	Force Time-out. This bit is self-clearing
0	WDT Status
	1: WDT value reaches 0.
	0: WDT value is not 0

WatchDog Timer Configuration Register (Index=72h,**Default=00h)**

Bit	Description
7	WDT Time-out value select
	1: Second
	0: Minute
6	WDT output through KRST (pulse) enable
5-4	Reserved
3-0	Select the interrupt level ^{Note} for WDT

WatchDog Timer Time-out Value Register (Index=73h,**Default=00h)**

Bit	Description
7-0	WDT Time-out value 7-0

A.2 IT8712 Watchdog Timer Initial Program

```
.MODEL SMALL
```

```
.CODE
```

Main:

```
CALL Enter_Configuration_mode
```

```
CALL Check_Chip
```

```
mov cl, 7
```

```
call Set_Logic_Device
```

```
;time setting
```

```
mov cl, 10 ; 10 Sec
```

```
dec al
```

Watch_Dog_Setting:

```
;Timer setting
```

```
mov al, cl
```

```
mov cl, 73h
```

```
call Superio_Set_Reg
```

```
;Clear by keyboard or mouse interrupt
```

```
mov al, 0f0h
```

```
mov cl, 71h
```

```
call Superio_Set_Reg
```

```
;unit is second.
```

```
mov al, 0C0H
```

```
mov cl, 72h
```

```
call Superio_Set_Reg
```

```
; game port enable  
mov cl, 9  
call Set_Logic_Device
```

```
Initial_OK:  
CALL Exit_Configuration_mode  
MOV AH,4Ch  
INT 21h
```

```
Enter_Configuration_Mode PROC NEAR  
MOV SI,WORD PTR CS:[Offset Cfg_Port]
```

```
MOV DX,02Eh  
MOV CX,04h  
Init_1:  
MOV AL,BYTE PTR CS:[SI]  
OUT DX,AL  
INC SI  
LOOP Init_1  
RET  
Enter_Configuration_Mode ENDP
```

```
Exit_Configuration_Mode PROC NEAR  
MOV AX,0202h  
CALL Write_Configuration_Data
```

RET

Exit_Configuration_Mode ENDP

Check_Chip PROC NEAR

MOV AL,20h

CALL Read_Configuration_Data

CMP AL,87h

JNE Not_Initial

MOV AL,21h

CALL Read_Configuration_Data

CMP AL,12h

JNE Not_Initial

Need_Initial:

STC

RET

Not_Initial:

CLC

RET

Check_Chip ENDP

Read_Configuration_Data PROC NEAR

MOV DX,WORD PTR CS:[Cfg_Port+04h]

OUT DX,AL

```
MOV DX,WORD PTR CS:[Cfg_Port+06h]
IN AL,DX
RET
Read_Configuration_Data ENDP
```

```
Write_Configuration_Data PROC NEAR
MOV DX,WORD PTR CS:[Cfg_Port+04h]
OUT DX,AL
XCHG AL,AH
MOV DX,WORD PTR CS:[Cfg_Port+06h]
OUT DX,AL
RET
Write_Configuration_Data ENDP
```

```
Superio_Set_Reg proc near
push ax
MOV DX,WORD PTR CS:[Cfg_Port+04h]
mov al,cl
out dx,al
pop ax
inc dx
out dx,al
ret
Superio_Set_Reg endp.Set_Logic_Device proc near
Set_Logic_Device proc near
```

```
push ax
push cx
xchg al,cl
mov cl,07h
call Superio_Set_Reg
pop cx
pop ax
ret
Set_Logic_Device endp

;Select 02Eh->Index Port, 02Fh->Data Port
Cfg_Port DB 087h,001h,055h,055h

DW 02Eh,02Fh
```

END Main

Note: Interrupt level mapping

0Fh-Dh: not valid

0Ch: IRQ12

.

.

03h: IRQ3

02h: not valid

01h: IRQ1

00h: no interrupt selected

Appendix

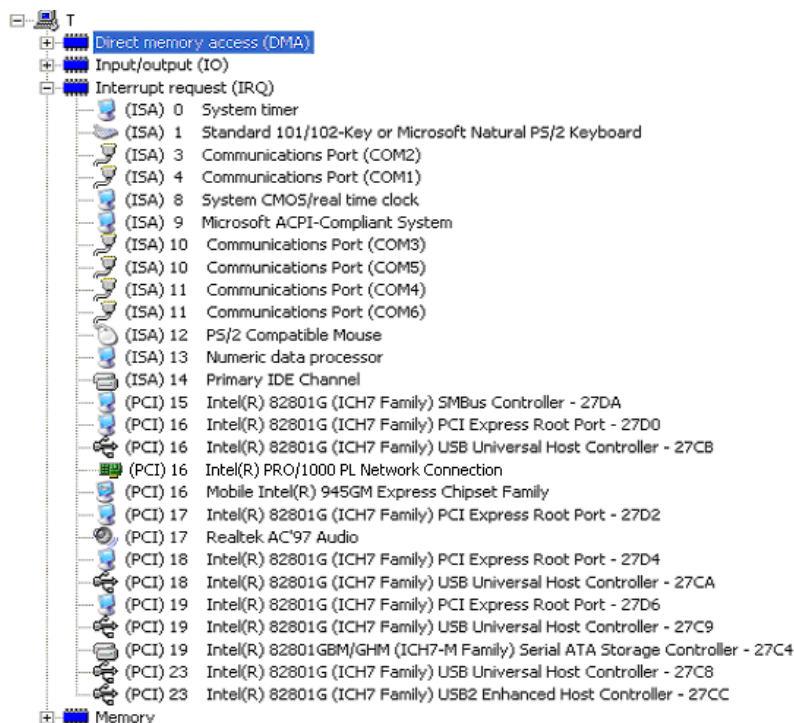
B

I/O Information

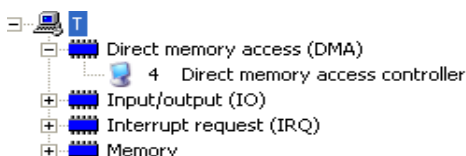
B.1 I/O Address Map

+	Direct memory access (DMA)
-	Input/output (IO)
-	PCI bus
	[00000000 - 00000CF7] PCI bus
	[00000000 - 0000000F] Direct memory access controller
	[00000010 - 0000001F] Motherboard resources
	[00000020 - 00000021] Programmable interrupt controller
	[00000022 - 0000003F] Motherboard resources
	[00000040 - 00000043] System timer
	[00000044 - 0000005F] Motherboard resources
	[00000060 - 00000060] Standard 101/102-Key or Microsoft Natural P5/2 Keyboard
	[00000061 - 00000061] System speaker
	[00000062 - 00000063] Motherboard resources
	[00000064 - 00000064] Standard 101/102-Key or Microsoft Natural P5/2 Keyboard
	[00000065 - 0000006F] Motherboard resources
	[00000070 - 00000073] System CMOS/real time clock
	[00000074 - 0000007F] Motherboard resources
	[00000080 - 00000090] Direct memory access controller
	[00000091 - 00000093] Motherboard resources
	[00000094 - 0000009F] Direct memory access controller
	[000000A0 - 000000A1] Programmable interrupt controller
	[000000A2 - 000000BF] Motherboard resources
	[000000C0 - 000000DF] Direct memory access controller
	[000000E0 - 000000EF] Motherboard resources
	[000000F0 - 000000FF] Numeric data processor
	[000001F0 - 000001F7] Primary IDE Channel
	[00000274 - 00000277] ISAPNP Read Data Port
	[00000279 - 00000279] ISAPNP Read Data Port
	[00000290 - 0000029F] Motherboard resources
	[000002E0 - 000002E7] Communications Port (COM5)
	[000002E8 - 000002EF] Communications Port (COM4)
	[000002F0 - 000002F7] Communications Port (COM6)
	[000002F8 - 000002FF] Communications Port (COM2)
	[00000378 - 0000037F] Printer Port (LPT1)
	[000003B0 - 000003BB] Mobile Intel(R) 945GM Express Chipset Family
	[000003C0 - 000003DF] Mobile Intel(R) 945GM Express Chipset Family
	[000003E8 - 000003EF] Communications Port (COM3)
	[000003F6 - 000003FF] Primary IDE Channel
	[000003F8 - 000003FF] Communications Port (COM1)
	[00000400 - 000004BF] Motherboard resources
	[000004D0 - 000004D1] Motherboard resources
	[00000500 - 0000051F] Intel(R) 82801G (ICH7 Family) SMBus Controller - 27DA
	[00000800 - 0000087F] Motherboard resources
	[00000880 - 0000088F] Motherboard resources
	[00000A79 - 00000A79] ISAPNP Read Data Port

B.3 IRQ Mapping Chart



B.4 DMA Channel Assignments



Appendix

C

Mating Connector

C.1 List of Mating Connectors and Cables

The table notes mating connectors and available cables.

Connector Label	Function	Mating Connector		Available Cable	Cable P/N
		Vendor	Model no		
CN1	CD-IN	HO BASE	2.54mm Pitch 4 pins (HO-BASE 2541-1H-4 or compatible)	CDROM Cable	1703040400
CN2	Digital I/O	Catch	2.00mm Pitch 10 pins (Catch H754-2x5 or compatible)	NA	NA
CN3	TV-Out	Catch	2.00mm Pitch 8 pins (Catch H754-2x4 or compatible)	TV-Out Cable	1700080180
CN4	Internal Keyboard	HO BASE	2.54mm Pitch 5 pins (HO-BASE 2503-H-5 or compatible)	NA	NA
CN5	Fan	Catch	2.54mm Pitch 3 pins (Catch 1190-700-03S or compatible)	NA	NA
CN6	Audio 5.1 Channel/ SPDIF	Catch	2.00mm Pitch 14 pins (Catch H709-2 or compatible)	Audio Cable	1700140164
CN7	Internal Mouse	HO BASE	2.0mm Pitch 4 pins (HO-BASE 2002-H-4 or compatible)	NA	NA
CN8	LCD Inverter	HO BASE	2.0mm Pitch 5 pins (HO-BASE 2002-H-5 or compatible)	NA	NA

CN10	LVDS LCD	Com Weal	1.25mm Pitch 30 Pins(ComWeal 103-303M or compatible)	NA	NA
CN11	DVI	Catch	2.00mm Pitch 8 pins (Catch H754-2x10 or compatible)	DVI Cable	1700200200
CN12	LVDS LCD	Com Weal	1.25mm Pitch 30 Pins(ComWeal 103-303M or compatible)	NA	NA
CN13	RS-232 Serial Port	Catch	2.00mm Pitch 10 pins (Catch H754-2x5 or compatible)	Serial Port Cable	1701100206
CN14	RS-232 Serial Port	Catch	2.00mm Pitch 10 pins (Catch H754-2x5 or compatible)	Serial Port Cable	1701100206
CN15	Fan	Catch	2.54mm Pitch 3 pins (Catch 1190-700-03S or compatible)	NA	NA
CN16	RS-232 Serial Port	Catch	2.00mm Pitch 10 pins (Catch H754-2x5 or compatible)	Serial Port Cable	1701100206
CN17	RS-232 Serial Port	Catch	2.00mm Pitch 10 pins (Catch H754-2x5 or compatible)	Serial Port Cable	1701100206
CN18	IrDA	HO BASE	2.0mm Pitch 6 pins (HO-BASE 2000-1H-6 or compatible)	NA	NA
CN19	ATX Power Socket	Catch	3.50 mm Pitch 20 pins (Catch 1121-700-20S or compatible)	NA	NA
CN20	USB Port	Catch	2.00mm Pitch 10 pins (Catch	USB Cable	1709100201

			H754-2x5 or compatible)		
CN21	USB Port	Catch	2.00mm Pitch 10 pins (Catch H754-2x5 or compatible)	USB Cable	1709100201
CN22	EIDE Connector	Catch	2.00mm Pitch 44 pins (Catch H820-2 or compatible)	EIDE Cable	1701440500
CN23	Front Pannel	HO BASE	2.54mm Pitch 10 pins (HO-BASE 2541-2H-2X5 or compatible)	NA	NA